

MX Water Quality and Monitoring Stations by SSC

Ask about our data / information management and visualization system within our NDMX model.

Sample tap for routine sampling with Remote control of your data management via the cloud based system

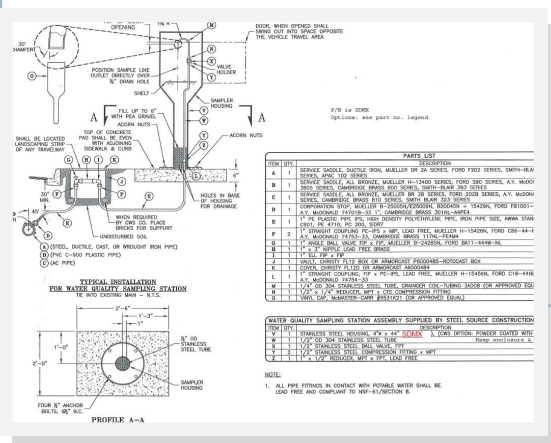


Heavy-Duty * Long Life Cycle Stations

- 100% thick gage S/S 304 or 316 housing
- Fusion bonded epoxy w/ colors available.
DA finish is standard.
- 1 pc. Gasket retainer provides anti pry.
- Drainage control 3 ways!
- Base design in use since 1966.

Patented & Proven

- Weather proof seal when closed.
- Highest degree of sheltered sampling
- Plumbing options: stainless, copper, Pex. & Dry Barrel
- Sample tap w/ equipment mgt. system for our online monitoring equipment (not shown) here.
- Extra sturdy open and close with this construction grade ergonomic, contamination preventive design.



The MX Water Quality Sampler: YOUR FOREVER EQUIPMENT

Email us today: info@steelsourceco.com or call (510) 582-2700

FOREVER EQUIPMENT



WWW.STEELSOURCECO.COM

Call us: (510) 582-2700 **CA. Public Utilities Commission Certified.**

SSC

STEEL SOURCE CONSTRUCTION